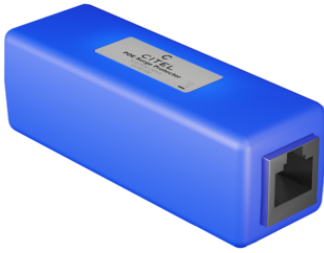


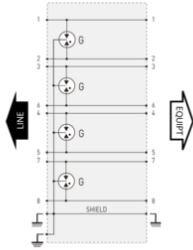
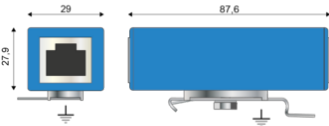
**MJ8-POE-C6A/G/KF**



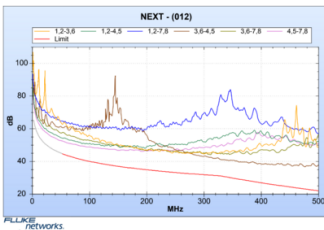
- POE++ compatible (IEEE 802.3bt)
- 10G compatible from 5m to 100m in the channel, using Cat-6A S/FTP cabling
- RJ45 Shielded connectors
- IEC 61643-21, EN 61643-21
- Indoor application: IP20 rating (NEMA 2)
- Plastic enclosure, UL94-V0
- Location and test categories: D1, C2, C3

**Electrical Characteristics**

Network		10Gb/s on Cat6A S/FTP cabling
Protection modes (network)		CM (Common Mode)
Protection modes (POE)		CM (Common Mode)
Transmission standard		IEEE 802.3bt
Lightning Protection Zones (LPZ)		0 - 2
Max. DC operating voltage	Uc	8 Vdc
Max. operating voltage (POE)	Uc	60 Vdc
Max. frequency, in the channel	f max.	500 MHz
Max. data rate		10 Gbps
Max. load current @25°C	IL	2 A
Max. POE power (4PPOE)		90 W
Max. discharge current max. withstand @ 8/20 μs, X-C (Line/Earth)	Imax	2 kA
Max. discharge current max. withstand @ 8/20 μs, 8X-C (1&2+3&6+4&5+7&8 to Earth)	Imax Total	16 kA
Protection Level C3 category (10/1000μs), 300 applications@10 A, X-X (Line/Line)	Up	< 700 V
Protection level C3 category (10/1000μs), 300 applications@10 A, X-C (Line/Earth)	Up	< 700 V
Protection Level C3 Category (10/1000μs), 300 applications @ 10A, (Pair-Pair, POE)	Up	< 700 V
Impulse current D1 category (10/350μs), 2 applications, X-C (Line/Earth)	Iimp	500 A
Impulse current D1 category (10/350μs), 2 applications, 8X-C (1&2+3&6+4&5+7&8 - Earth)	Iimp Total	4 kA
Nominal Discharge Current C2 category (8/20μs), 10 applications, X-X (Line/Line)	In	4 kV / 2 kA
Nominal discharge current C2 category (8/20μs), 10 applications X-C (Line/Earth)	In	4 kV / 2 kA
Line resistance (± 10%)		0 Ohm
Capacitance @1MHz, X-C (Line/Earth)	C	< 5 pF



G: 3-electrode gas tube



**Installation**

Wiring type		Cat-6A S/FTP cabling
Operating Relative HumidityMax	%RH	95
Operating AltitudeMax	Ft	6500.0000
Installation Location		Outdoor

**Mechanical Characteristics**

Technology		Gas discharge tube
Connection to Network		RJ45 shielded connectors Female input/output
Cable glands		N/A
Format		Plastic Box with connectors input/output
Accessory(s) provided		Screw, washer, cable shoe, earthing plate, DIN rail adapter
Failsafe mode		Transmission cut-off - fault mode 2 (short circuit)
Pinout		(1-2)(3-6)(4-5)(7-8)
Weight		0.05 kg / 0.11 lbs
TECHNOLOGY		GDT
NETWORK CONFIGURATION		Single POE Line
CONNECTION METHOD		Shielded RJ45
MOUNTING		Mounting Flange, Screw Lug, DIN Rail- Mounting Kit
MATERIAL		UV rated Thermoplastic
FLAMMABILITY RATING		UL94-V0
NEMA RATING (IP RATING)		NEMA 2 (IP20)
DIMENSIONS		See diagram

**Standards**

Operating Temperature		-40/+85C
STANDARDS		IEC 61643-21, EN 61643-21



*Indoor Cat. 6A 10Gb/s rated POE Surge Protective Device & Mounting Hardware Kit*

**MJ8-POE-C6A/G/KF**

ENVIRONMENTAL STANDARDS	ROHS
Part number	
581551	

