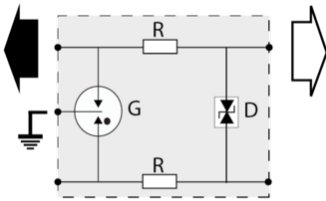
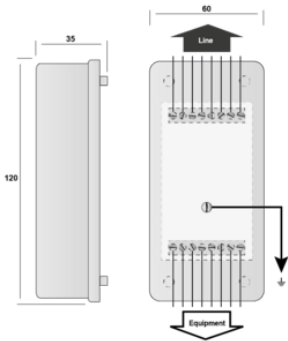




- ↳ Hybrid SAD-GDT Technology
- ↳ UL497B LISTED
- ↳ 20kA I_{max}
- ↳ 5kA I_{imp}
- ↳ 5kA I_n



P: 3-electrode gas tube
 R: Resistor
 D: Clamping diode

Electrical Characteristics			
Max. DC operating voltage	U _c		170 Vdc
Insertion loss			< 1 dB
Protection mode(s)			Common/Differential mode
DATA SPD TYPE			UL497B LISTED
VOLTS	(V)		150
WIRES			8W+GROUND
LINE CURRENT MAX	(A)		0.3
AMBIENT MIN	(C)		-50
AMBIENT MAX	(C)		+85
RESIDUAL VOLTAGE	(V)		20
MCOV	(V)		170
I _N	(kA)		5
10 impulses 8/20μs			
I _{MAX}	(kA)		20
8/20μs			
I _{imp}	(kA)		5
10/350μs			
DATA SPEED	(Mbps)		up to 10MHz
Mechanical Characteristics			
Connection to Network			By screw terminal: cross section 0.4-1.5mm ²
Weight			0.138 kg
TECHNOLOGY			SAD-GDT
NETWORK CONFIGURATION			8W+G
CONNECTION METHOD			RJ11 Connector
MOUNTING			Wall mount
MATERIAL			Thermoplastic UL94-V0
NEMA RATING (IP RATING)			NEMA 2 (IP20)
DIMENSIONS			See diagram
WEIGHT			0.30 lbs
SPARE PART			n/a
Standards			
Certification			UL listed
UL STANDARD			UL497B
UL CATEGORY			QVGQ
UL FILE NUMBER			E184939
STANDARDS			IEC 61643-11, NOM-003-SCFI-2014, NOM-001-SCFI-1993
ENVIRONMENTAL STANDARDS			ROHS
Part number			
72746			

