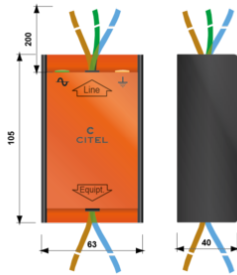


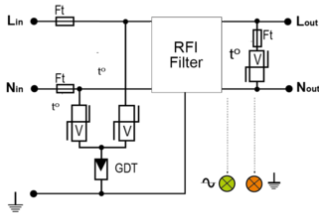


# CITEL

## MSB-130HF/US



Electrical Characteristics	
Network	230 V single-phase
Max. load current @25°C	IL 16 A
Protection mode(s)	Common/Differential mode
Mechanical Characteristics	
Technology	MOV+GDT+Filter
Connection to Network	Wires
Failsafe mode	Disconnection and AC line cut-off
Weight	0.37 kg
Standards	
Certification	
Part number	
400	



- V: Varistor
- GSG: Specific gas tube
- RFI: RFI filtering
- Ft: Thermal fuse
- t\*: Thermal disconnection system
- LED: Operating indicator

