

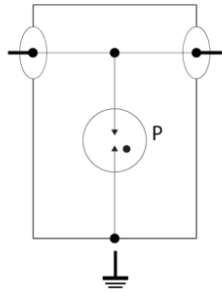
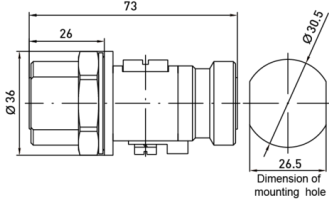


# CITEL

## P8AX50-716/FF



↳ 6GHz Bi-Directional Coaxial Surge Protector - No follow current - Low Insertion Loss - Waterproof Design - DC Pass



P: 2-electrode gas discharge tube

### Electrical Characteristics

Max. DC operating voltage	Uc	400 Vdc
Frequency range	f	DC-3.5 GHz
Insertion loss		< 0.2 dB
Return loss		> 20 dB
Impedance		50 ohms
VSWR		<1.2:1
Max. load current @25°C	IL	10 A
Protection mode(s)		Common mode
Impulse current 2 x 10/350µs Test - D1 Category	limp	1 kA
Nominal discharge current C2 Category	In	5 kA
Max Power		780 W
DC Pass		Yes
Insulation resistance	IR	≥10 GOhms
RF Power Maximum	W	780.0000
Return Loss Minimum	db	>20
VSWR Maximum	:1	<1.2:1
Max Total Discharge Current Imax (8/20µs x 1)	kA	20.0000
Max Discharge Current Imax (8/20µs x 1)	kA	20.0000
RF SPD TYPE		UL497E LISTED
VOLTS	(V)	48
AC/DC/DC PV/RF		RF
WIRES		1W+GROUND
LINE CURRENT MAX	(A)	10
AMBIENT MIN	(C)	-40
AMBIENT MAX	(C)	+85
IMAX 8/20µs	(kA)	20
FREQUENCY RANGE	(GHz)	0-4.0
INSERTION LOSS (@ FREQ)	(db)	<0.2
RETURN LOSS	(db)	>22
VSWR		<1.25:1

### Installation

Operating TemperatureMin	°C	-45.0000
Operating TemperatureMax	°C	85.0000
Operating TemperatureMin	°F	-50.0000
Operating TemperatureMax	°F	85.0000
Operating Relative HumidityMax	%RH	Can be submerged
Operating AltitudeMin	Ft	2000.0000
Operating AltitudeMax	Ft	6500.0000
Housing/Enclosure material		Cu, Zn, Sn plated Brass
Mounting		Bracket or through hole
IP Environmental rating/IP		IP65
NEMA Environmental rating/NEMA		NEMA 4
Installation Location		Indoor / outdoor
Spare part		BB HF 500/20
Accessories		BK
Product DimensionL	mm	73.0000
Product DimensionH	mm	36.0000
Product DimensionW	mm	26.5000

Product Dimension $L$	In	2.8700
Product Dimension $H$	In	1.4200
Product Dimension $W$	In	1.0400
<b>Miscellaneous</b>		
Individual Pack		No
Storage Temperature $Min$	°C	-40.0000
Storage Temperature $Max$	°C	85.0000
Storage Temperature $Min$	°F	-40.0000
Storage Temperature $Max$	°F	85.0000
<b>Mechanical Characteristics</b>		
Technology		Gas discharge tube
Connection to Network		Connector 7/16 Female/Female
Failsafe mode		Short-circuit
Contacts		Bronze/Surface Au-Ag
Insulation material		PTFE
TECHNOLOGY		GDT
CONNECTION METHOD		SERIES CONNECTOR, BI-DIRECTIONAL
MOUNTING		BULKHEAD, OPTIONAL BRACKET
MATERIAL		Cu, Zn, Sn plated Brass, PTFE
NEMA RATING (IP RATING)		NEMA 6P (IP67)
DIMENSIONS		See diagram
WEIGHT		0.30 lbs
<b>Standards</b>		
RohS compliance		Yes
UL STANDARD		UL497E
UL CATEGORY		QVLA
UL FILE NUMBER		E349646
STANDARDS		NOM-003-SCFI-2014, NOM-001-SCFI-1993
ENVIRONMENTAL STANDARDS		ROHS
<b>Part number</b>		
<b>60417</b>		