



CITEL

SURGE PROTECTORS

FOR

Security Systems



citel.us

CITEL,



the global solutions provider.

Since 1937, Citel has been an innovator in the field of Surge Protection. Today, Citel is a global leader in the development of reliable and adapted Surge Mitigation Solutions for critical applications.

Citel is unique as a manufacturer of Surge Protective Components (SPCs), Surge Protective Devices (SPDs), and coordinated protection systems.

- Over 1 billion lines protected
- Local support in over 200 countries
- High current R&D laboratories at your disposal

THREAT

\$26B in Losses due to Power Surges

Today's increased reliance on very sensitive electronics and processes make surge protection an important discussion topic in order to avoid catastrophic business losses. The Insurance Institute for Business & Home Safety study found that \$26 billion dollars was lost due to non-lightning power surges. In addition, there are about 25 million lightning strikes in the US each year that cause between \$650M to \$1B in losses according to the Insurance Information Institute, State Farm©.

1. Direct Strike



2. Earth Potential Rise



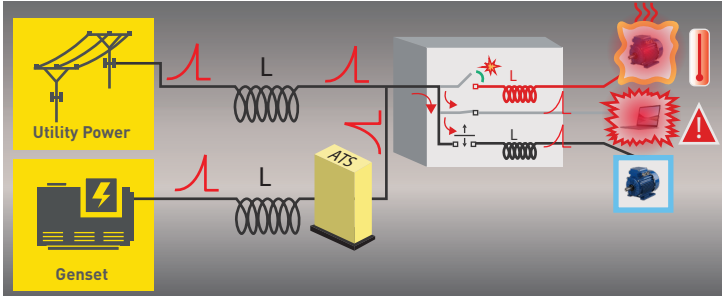
3. Strike on Overhead Lines



4. Coupling



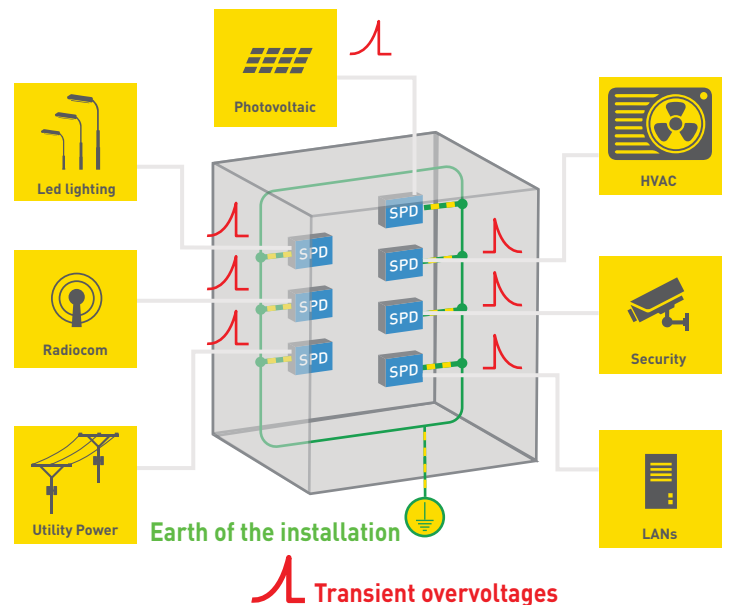
5. Switching



SOLUTION

Global Surge Mitigation Concept

Our philosophy is simple – determine your risk and evaluate every line (power or signal) for vulnerabilities. We call this "The Box Concept." It works equally well for a single piece of equipment or an entire facility. Once you have determined your "boxes", it is simple to develop a coordinated protection scheme to eliminate all threats from lightning and switching surges.



CITEL provides a wide range of surge protectors adapted to every network: **AC Power, DC Power, Telecom, Data and Coaxial.**

COMMON SECURITY SYSTEM APPLICATIONS

As modern Security Systems become more sophisticated, the risk of damage caused by lightning strikes and power grid disturbances becomes more prominent. Advanced Security Systems must deploy reliable Surge Protective Devices (SPDs) to ensure continuous operation.

Access Control



Entry/Exit Keypad



- Remote Gates
- Door Access
- Cameras/Facial Recognition
- Identity Authentication Systems

Monitoring Systems



CCTV Camera



- Night Vision Cameras
- Motion Sensors
- Smart AI Cameras
- Facial Recognition Systems

Control Rooms



Sensitive Data Storage

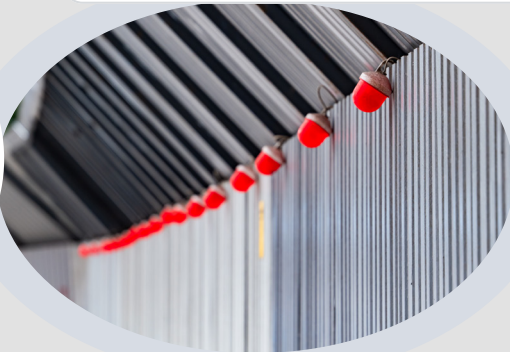


- Facial Recognition Systems
- Monitor Arrays
- Surveillance Camera Feeds
- Remote Access Control

Security & Safety Alert Systems



Fire Alarm



- Thermal Cameras
- Fire Alarms
- Halon Systems
- Fire Suppression Sprinklers

COORDINATED PROTECTION STRATEGY



Description/Location/Model

AC Power Supply	1	M50 Series	PoE Video Feed	4	LAN-10G-POE
DIN Rail AC	2	DAC100 Series	PoE Switch	5	MJ8-C6A
Luminare Power	3	MSB10 Series	Remote Signaling	6	DLA Series
Rack Server In/Out	7	RAK Series			

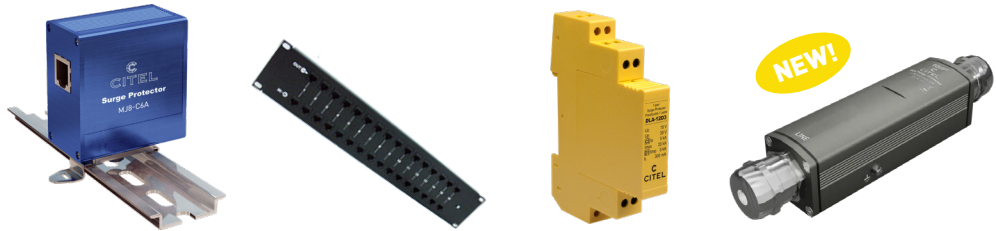
RECOMMENDED PRODUCTS (TECHNICAL CHARACTERISTICS)

AC Power



Product	M50	DAC100US	MSB10
Application	Main Service Panel	Incoming AC Power	LED Fixtures
Voltage(s)	120, 277, 240, 480, 600	120, 240, 277	120, 230, 480
Phase	Single, Split, WYE, Delta	Single, Split, WYE	Single
In (8/20μs)-kA	20		3
I _{max} (8/20μs)-kA	50	100	18
UL Standard	Listed Type 1		Listed Type 2

Ethernet & Dataline



Product	MJ8-C6A	RAK	DLA	LAN-10G-POE
Application	Indoor Gigabit Ethernet & PoE			Outdoor 10 Gigabit Ethernet & PoE
Connection	Ethernet	RJ45	Screw-Terminal	RJ45
Voltage(s)-(DC)	60	8	12, 24, 48	60
I _{max} (8/20μs)-kA	16	1	20	16
UL Standard	UL 497B			UL 497B (pending)

Coaxial



Product	P8AX
Application	Coaxial/RF
Connection	N, F, BNC, SMA, TNC
Voltage(s)-(DC)	up to 400
I _{max} (8/20μs)-kA	20
UL Standard	UL 497E

USA

Hillsborough, NC
Tel: (954) 430 6310
Email: info@citel.us
Web: citel.us

France

Head Office
Sales Department
Paris
Tel: +33 1 41 23 50 23
Email: export@citel.fr
Web: citel.fr

Factory

Reims
Tel: +33 3 26 85 74 00

Germany

Bochum
Tel: +49 2327 6057 0
Email: info@citel.de
Web: citel.de



China

Shanghai
Tel: +86 21 58 12 25 25
Email: info@citelsh.com
Web: citel.cn

India

New Delhi
Tel: +91 11 4001 81 31
Email: indiacitel@gmail.com
Web: citel.in

Thailand

Bangkok
Tel: +66 (0) 2 104 9214
Web: citel.fr

U.A.E

Dubai
Email: info@citel.ae
Web: citel.fr

Colombia

Bogota
Email: export@citel.fr
Web: citel.fr