



# CITEL

## SURGE PROTECTORS

FOR

LED Lighting



[citel.us](http://citel.us)

# CITEL, the global solutions provider.



Since 1937, Citel has been an innovator in the field of Surge Protection. Today, Citel is a global leader in the development of reliable and adapted Surge Mitigation Solutions for critical applications.

Citel is unique as a manufacturer of Surge Protective Components (SPCs), Surge Protective Devices (SPDs) and coordinated protection systems.

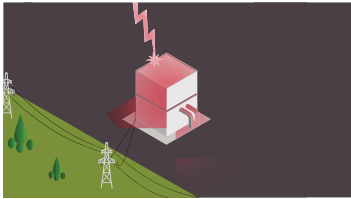
- Over 1 billion lines protected
- Local support in over 200 countries
- High current R&D laboratories at your disposal

## THREAT

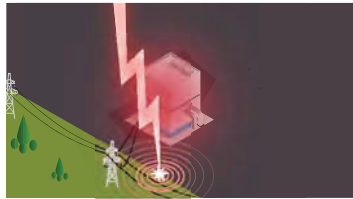
### \$26B in Losses due to Power Surges

Today's increased reliance on very sensitive electronics and processes make surge protection an important discussion topic in order to avoid catastrophic business losses. The Insurance Institute for Business & Home Safety study found that \$26 billion dollars was lost due to non-lightning power surges. In addition, there are about 25 million lightning strikes in the US each year that cause between \$650M to \$1B in losses according to the Insurance Information Institute, State Farm©.

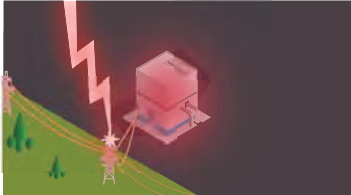
1. Direct Strike



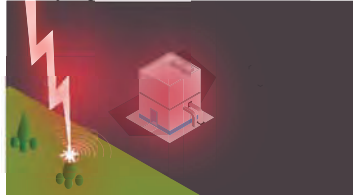
2. Earth Potential rise



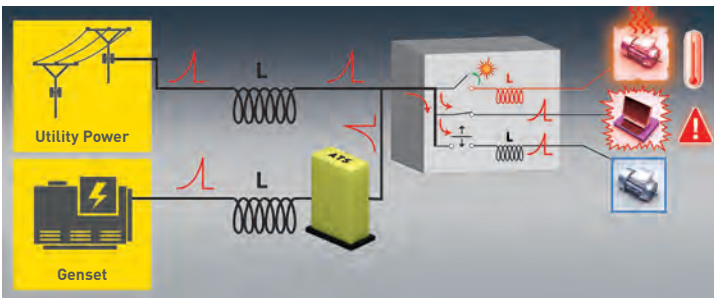
3. Strike on overhead lines



4. Coupling



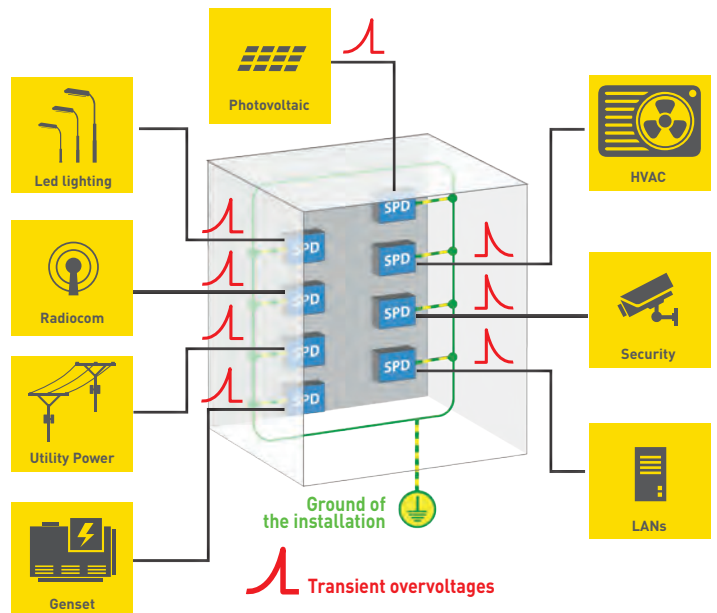
5. Switching



## SOLUTION

### Global Surge Mitigation Concept

Our philosophy is simple – determine your risk and evaluate every line (power or signal) for vulnerabilities. We call this "The Box Concept." It works equally well for a single piece of equipment or an entire facility. Once you have determined your "boxes", it is simple to develop a coordinated protection scheme to eliminate all threats from lightning and switching surges.



CITEL provides a wide range of surge protectors adapted to every network: **AC Power, DC Power, Telecom, Data and Coaxial.**

# COMMON LED LIGHTING APPLICATIONS

As the technology for LED Lighting becomes more sophisticated, the risk of damage caused by lightning strikes and power grid disturbances becomes more prominent. Advanced LED Lighting systems must deploy a coordinated system of Surge Protective Devices (SPDs) to ensure continuous operation.

## Architectural Lighting

- Exterior Area Lighting
- Dormitory Lighting
- Dimmers
- Emergency Signage



**Indoor Light Fixtures**

## Roadway Lighting

- Traffic Signals
- Area Lighting
- Dynamic Signage



**Street Light**

## Street Cabinets

- Signal Lighting AC Power
- Digital Addressable Lighting Interface (DALI)
- Traffic Control Data Connection
- AC to DC Converters



**Traffic Signal Control**

# COORDINATED PROTECTION STRATEGY



## Description/Location/Model

|                 |   |                |                  |   |            |
|-----------------|---|----------------|------------------|---|------------|
| AC Power Supply | 1 | M50 Series     | DC Power Supply  | 4 | DS240S     |
| DIN Rail AC     | 2 | DAC80US Series | PoE Switch       | 5 | MJ8-POE    |
| Luminare Power  | 3 | MLPXU Series   | Remote Signaling | 6 | DLA Series |

# RECOMMENDED PRODUCTS (TECHNICAL CHARACTERISTICS)

## Street Cabinet



| Product                      | M50                 | DAC80US            |
|------------------------------|---------------------|--------------------|
| Application                  | AC Service Entrance | Fixture Main Power |
| Voltage(s)                   | 120, 240, 277       |                    |
| Phase                        | Single, Split       |                    |
| In (8/20μs)-kA               | 20                  |                    |
| I <sub>max</sub> (8/20μs)-kA | 440                 | 80                 |
| UL Standard                  | Listed Type 1       |                    |

## LED Luminaire



| Product                      | MLPXU-HE          | MLPC          | MSB10         |
|------------------------------|-------------------|---------------|---------------|
| Application                  | Incoming AC Power | LED Fixtures  |               |
| Voltage(s)                   | 277               |               | 120, 230, 480 |
| Phase                        | Single            |               |               |
| In (8/20μs)-kA               | 10                | 5             | 3             |
| I <sub>max</sub> (8/20μs)-kA | 22                | 10            | 18            |
| UL Standard                  | Recognized        | Listed Type 2 |               |

## DC Power



| Product                      | DS220S              |
|------------------------------|---------------------|
| Application                  | Incoming DC Power   |
| Voltage(s)-(DC)              | 12, 24, 48          |
| In (8/20μs)-kA               | 10                  |
| I <sub>max</sub> (8/20μs)-kA | 20, 30              |
| UL Standard                  | Recognized Type 4CA |

## Ethernet & Dataline



| Product                      | DLA                           |
|------------------------------|-------------------------------|
| Application                  | Indoor Gigabit Ethernet & POE |
| Voltage(s)-(DC)              | 12, 24, 48                    |
| I <sub>max</sub> (8/20μs)-kA | 20                            |
| UL Standard                  | UL 497B                       |

## France

Head Office

Sales Department

Paris

Tel. : +33 1 41 23 50 23

e-mail : [export@citel.fr](mailto:export@citel.fr)

Web : [citel.fr](http://citel.fr)

Factory

Reims

tel. : +33 3 26 85 74 00

## USA

Miramar

Tel. : (954) 430 6310

e-mail : [info@citel.us](mailto:info@citel.us)

Web : [citel.us](http://citel.us)

## Germany

Bochum

Tel. : +49 2327 6057 0

e-mail : [info@citel.de](mailto:info@citel.de)

Web : [citel.de](http://citel.de)

## China

Shanghai

Tel. : +86 21 58 12 25 25

e-mail : [info@citelsh.com](mailto:info@citelsh.com)

Web : [citel.cn](http://citel.cn)

## India

New Delhi

Tel. : +91 11 4001 81 31

e-mail : [indiacitel@gmail.com](mailto:indiacitel@gmail.com)

Web : [citel.in](http://citel.in)

## Thailand

Bangkok

Tel. : +66 (0) 2 104 9214

Web : [citel.fr](http://citel.fr)

## U.A.E

Dubai

email : [info@citel.ae](mailto:info@citel.ae)

Web : [citel.fr](http://citel.fr)

## Colombia

Bogota

email : [export@citel.fr](mailto:export@citel.fr)

Web : [citel.fr](http://citel.fr)

