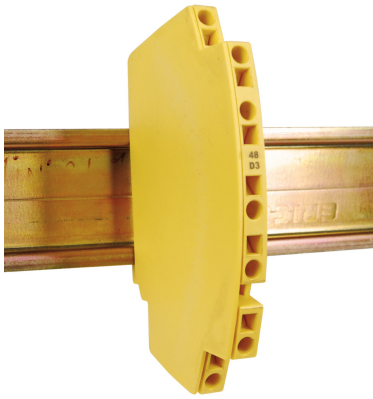




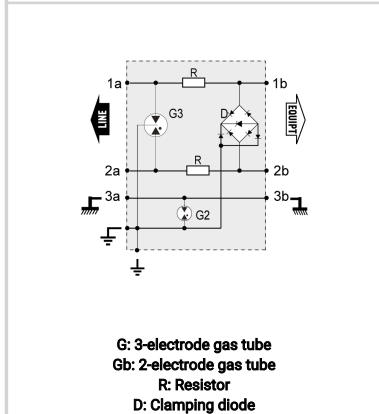
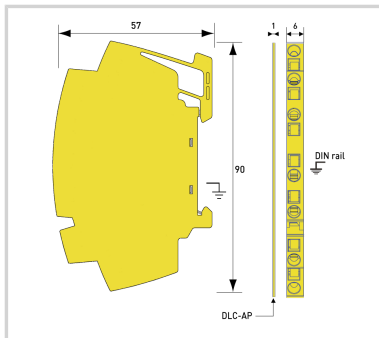
CITEL

UL497B LISTED - I_{max} 20kA - I_n 5kA - Modular

DLC-48D3



- Hybrid Technology
- Compact 6mm module
- UL497B LISTED
- 10kA I_{max} (1x 8/20us)
- 2.5kA I_{imp} (2x 10/350us)
- 5kA I_n (10x 8/20us)
- 2W+SHIELD+G
- Common/Differential mode protection



Electrical Characteristics		
Network		ISDN, 48 V line
Nominal line voltage	Un	48 V
Max. DC operating voltage	Uc	53 Vdc
Cut-off frequency -3dB, 100 ohm system	f max.	> 100 MHz
Cut-off frequency -1dB, 100 ohm system	f max.	> 45 MHz
Insertion loss		< 1 dB
Max. load current @25°C	IL	300 mA
Max. discharge current max. withstand @ 8/20 μs by pole	I _{max}	10 kA
Nominal Discharge Current, X-C (Line/Earth) 8/20μs Test x 10 - C2 Category	I _n L/PE	5 kA
Protection Level C3 (10/1000μs), 300 applications@10 A, Y-Y (Line/Line)	Up	70 V
Protection Level C3 (10/1000μs), 300 applications@10 A, Y-C (Line/Earth)	Up	70 V
Impulse current 2 x 10/350μs Test - D1 Category	I _{imp}	2.5 kA
Line resistance (± 10%)		4.7 Ohm
FREQUENCY	(MHz)	up to 10
Mechanical Characteristics		
Technology		GDT+TVS diode
Connection to Network		By spring terminal - max. cross section 2.5mm ² / AWG 13 (solid or stranded)
Format		DIN box
Mounting		Symmetrical rail 35 mm (EN 60715)
Operating temperature	Tu	-40/+85°C
Ingress Protection rating		IP20 (NEMA 2)
Failsafe mode		Short-circuit
NETWORK CONFIGURATION		1 pair
MATERIAL		Thermoplastic UL94-V0
NEMA RATING (IP RATING)		NEMA 2 (IP20)
DIMENSIONS		See diagram
Standards		
Certification		UL Listed
Environmental standards		EU RoHS
UL STANDARD		UL497B
UL CATEGORY		QVGQ
UL FILE NUMBER		E184939
STANDARDS		IEC 61643-11, NOM-003-SCFI-2014, NOM-001-SCFI-1993
Part number		
641104		

