



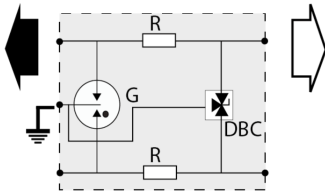
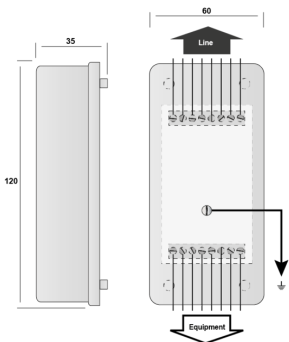
CITEL

DATA LINE SPD - UL497B LISTED - I_{max} 20kA - I_n 5kA

B280-48DBC



- ✦ Hybrid SAD-GDT Technology
- ✦ UL497B LISTED
- ✦ 20kA I_{max}
- ✦ 5kA I_{imp}
- ✦ 5kA I_n



Gb: 3-electrode gas tube
 R: Resistor
 DBC: 3-pole low capacitance diode

Electrical Characteristics		
Network		RNIS-T0, 48 V line
Max. DC operating voltage	U _c	53 Vdc
Max. frequency	f max.	> 20 MHz
Insertion loss		< 1 dB
Protection mode(s)		Common/Differential mode
Protection Level C3 (10/1000µs), 300 applications@10 A, X-X (Line/Line)	U _p	75 V
Protection level C3 (10/1000µs), 300 applications@10 A, X-C (Line/Earth)	U _p	20 V
DATA SPD TYPE		UL497B LISTED
VOLTS	(V)	48
WIRES		4W+GROUND
LINE CURRENT MAX	(A)	0.3
AMBIENT MIN	(C)	-50
AMBIENT MAX	(C)	+85
RESIDUAL VOLTAGE	(V)	20
MCOV	(V)	60/72/72
I _N 10 impulses 8/20µs	(kA)	5
I _{MAX} 8/20µs	(kA)	20
I _{imp} 10/350µs	(kA)	5
DATA SPEED	(Mbps)	10/100/1000
Mechanical Characteristics		
Technology		GDT+TVS diode
Connection to Network		By screw terminal: cross section 0.4-1.5mm ²
Format		Wall mounting box
Failsafe mode		Short-circuit - transmission cut-off - fault mode 2
Weight		0.043 kg
TECHNOLOGY		SAD-GDT
NETWORK CONFIGURATION		4W+G
CONNECTION METHOD		RJ11 Connector
MOUNTING		Wall mount
MATERIAL		Thermoplastic UL94-V0
NEMA RATING (IP RATING)		NEMA 2 (IP20)
DIMENSIONS		See diagram
WEIGHT		0.30 lbs
SPARE PART		n/a
Standards		
Certification		UL 497B
UL STANDARD		UL497B
UL CATEGORY		QVGQ
UL FILE NUMBER		E184939
STANDARDS		IEC 61643-11, NOM-003-SCFI-2014, NOM-001-SCFI-1993
ENVIRONMENTAL STANDARDS		ROHS
Part number		
72754		

