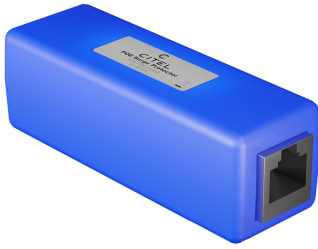




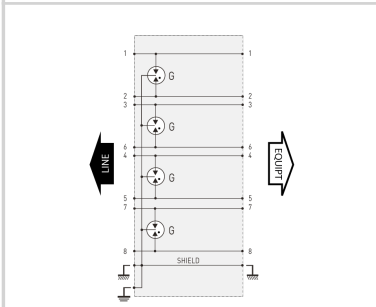
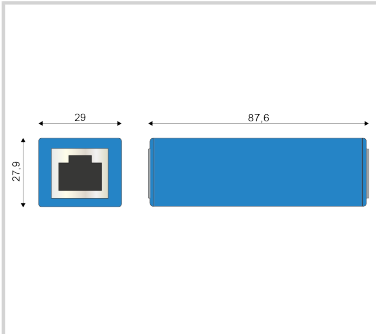
CITEL



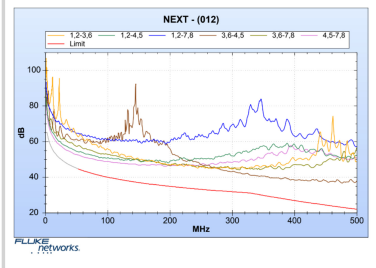
Indoor Cat. 6A 10Gb/s rated POE Surge Protective Device

MJ8-POE-C6A/G

- ▶ POE++ compatible (IEEE 802.3bt)
- ▶ 10G compatible from 5m to 100m in the channel, using Cat-6A S/FTP cabling
- ▶ RJ45 Shielded connectors
- ▶ IEC 61643-21, EN 61643-21
- ▶ Indoor application: IP20 rating (NEMA 2)
- ▶ Plastic enclosure, UL94-V0
- ▶ Location and test categories: D1, C2, C3



G: 3-electrode gas tube



Electrical Characteristics

Network		10Gb/s on Cat6A S/FTP cabling
Protection modes (network)		CM / DM
Protection modes (POE)		CM (Common Mode)
Transmission standard		IEEE 802.3bt
Lightning Protection Zones (LPZ)		0 - 2
Max. DC operating voltage	Uc	8 Vdc
Max. operating voltage (POE)	Uc	60 Vdc
Max. frequency, in the channel	f max.	500 MHz
Max. data rate		10 Gbps
Max. load current @25°C	IL	2 A
Max. POE power (4PPOE)		90 W
Nominal Discharge Current C2 (1.2/50µs / 8/20µs), 10 applications, X-X (Line/Line)	In	4 kV / 2 kA
Nominal discharge current C2 (1.2/50µs / 8/20µs), 10 applications X-C (Line/Earth)	In	4 kV / 2 kA
Max. discharge current max. withstand @ 8/20 µs, X-C (Line/Earth)	Imax	2 kA
Max. discharge current max. withstand @ 8/20 µs, 8X-C (1&2+3&4+5+6+7&8 to Earth)	Imax Total	16 kA
Protection Level C3 (10/1000µs), 300 applications@10 A, Y-Y (Line/Line)	Up	< 700 V
Protection Level C3 (10/1000µs), 300 applications@10 A, Y-C (Line/Earth)	Up	< 700 V
Protection Level C3 (10/1000µs), 300 applications @ 10A, (Pair-Pair, POE)	Up	< 700 V
Impulse current D1 (10/350µs), 2 applications, X-C (Line/Earth)	Iimp	500 A
Impulse current D1 (10/350µs), 2 applications, 8X-C (1&2+3&4+5+6+7&8 - Earth)	Iimp Total	4 kA
Line resistance (± 10%)		~ 0 ohms
Capacitance @1MHz, X-C (Line/Earth)	C	< 5 pF

Installation

Wiring type		Cat-6A S/FTP cabling
Operating Relative HumidityMax	%RH	95
Operating AltitudeMax	Ft	6500.0000
Installation Location		Indoor

Mechanical Characteristics

Technology		Gas discharge tube
Connection to Network		RJ45 shielded connectors Female input/output
Format		Plastic Enclosure with connectors input/output
Mounting		DIN rail / Wall / Plate
Accessory(s) provided		screw, washer, cable shoe
Operating temperature	Tu	-40/+85°C
Ingress Protection rating		IP20 (NEMA 2)
Failsafe mode		Transmission cut-off - fault mode 2 (short circuit)
Pinout		(1-2)(3-6)(4-5)(7-8)
NETWORK CONFIGURATION		Single POE Line
MATERIAL		UV rated Thermoplastic
FLAMMABILITY RATING		UL94-V0
DIMENSIONS		See diagram

Standards

Environmental standards		EU RoHS
Operating Temperature		-40/+85C
STANDARDS		IEC 61643-21, EN 61643-21

Part number

581550

