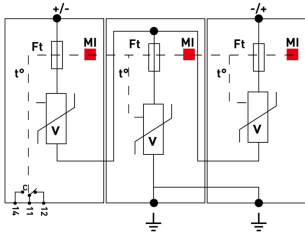
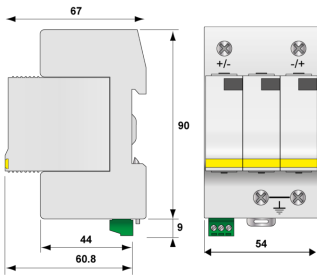


- ✦ MOV Technology
- ✦ UL1449 5th Edition-Type 4CA
- ✦ 40kA Surge Current Rating
- ✦ Visual fault indicator and remote contacts
- ✦ 10-Year warranty



V: High-energy varistor
 Ft: Thermal fuse
 t*: Thermal disconnection system
 MI: Disconnection indicator C: Remote signal contact

Electrical Characteristics		
Network		PV network 1250 Vdc
Protection mode(s)		Common/Differential mode
POWER SPD TYPE		UL1449 5th Ed TYPE 4CA
VOLTS	(V)	1500
AC/DC/DC PV/RF		DC
PHASE	(PH)	-
AMPS	(A)	N/A
AMBIENT MIN	(C)	-40
AMBIENT MAX	(C)	+85
MODES		DC+DC-, DC+G, DC-G
MLV	(V)	3400/2240/2240
MCOV	(V)	1500/1500/1500
IN	(kA)	10
15 impulses 8/20µs		
SCCR	(kA)	n/a
IMAX	(kA)	40
8/20µs		
Mechanical Characteristics		
Technology		MOV
Connection to Network		By screw terminals: 2.5-25mm ² / by bus
Format		Plug-in modular box
Failsafe mode		Disconnection SPD of the PV line
Weight		0.334 kg
TECHNOLOGY		MOV
NETWORK CONFIGURATION		3 poles, 2W+G
CONNECTION METHOD		SPD-Screw Terminal (8-12AWG), Terminal blocks 6AWG
MOUNTING		DIN RAIL
MATERIAL		Thermoplastic UL94-V0
NEMA RATING (IP RATING)		NEMA 2 (IP20)
FAIL-SAFE BEHAVIOR		Disconnection via fuse-link
REAL-TIME DIAGNOSTICS		Visual indicator and remote contacts
DIMENSIONS		See diagram
Standards		
Certification		UL Recognized
UL STANDARD		UL1449 5th Edition
UL FILE NUMBER		E326289
Part number		
487571		