

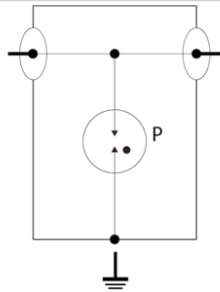


CITEL

P8AX25-4310/MF



➤ 6GHz Bi-Directional Coaxial Surge Protector - High Energy GDT Technology - Low Insertion Loss - Field Replaceable GDT - Waterproof Design - DC Pass - UL497E Listed



P: 2-electrode gas discharge tube

Electrical Characteristics		
Max. DC operating voltage	Uc	200 Vdc
Frequency range	f	DC-3.5 GHz
Insertion loss		< 0.2 dB
Return loss		> 20 dB
Impedance		50 ohms
VSWR		<1.2:1
Max. load current @25°C	IL	10 A
Protection mode(s)		Common mode
Impulse current 2 x 10/350µs Test - D1 Category	limp	1 kA
Nominal discharge current C2 Category	In	5 kA
Max Power		190 W
DC Pass		Yes
Insulation resistance	IR	≥10 GOhms
RF Power Maximum	W	25.0000
Return Loss Minimum	db	>20
VSWR Maximum	:1	<1.2:1
Max Total Discharge Current Imax (8/20µs x 1)	kA	10.0000
Max Discharge Current Imax (8/20µs x 1)	kA	10.0000
RF SPD TYPE		UL497E LISTED
VOLTS	(V)	48
AC/DC/DC PV/RF		RF
WIRES		1W+GROUND
LINE CURRENT MAX	(A)	10
AMBIENT MIN	(C)	-40
AMBIENT MAX	(C)	+85
IMAX 8/20µs	(kA)	20
FREQUENCY RANGE	(GHz)	0-4.0
INSERTION LOSS (@ FREQ)	(db)	<0.2
RETURN LOSS	(db)	>22
VSWR		<1.25:1
Installation		
Operating TemperatureMin	°C	-45.0000
Operating TemperatureMax	°C	85.0000
Operating TemperatureMin	°F	-50.0000
Operating TemperatureMax	°F	85.0000
Operating Relative HumidityMax	%RH	Can be submerged
Operating AltitudeMin	Ft	2000.0000
Operating AltitudeMax	Ft	6500.0000
Housing/Enclosure material		Cu, Zn, Sn plated Brass
Mounting		Bracket or through hole
IP Environmental rating/IP		IP65
NEMA Environmental rating/NEMA		NEMA 4
Installation Location		Indoor / outdoor
Spare part		BB HF 90/20
Accessories		BK
Product DimensionL	mm	73.0000
Product DimensionH	mm	36.0000
Product DimensionW	mm	26.5000
Product DimensionL	In	2.8700
Product DimensionH	In	1.4200
Product DimensionW	In	1.0400
Miscellaneous		
Individual Pack		No
Storage TemperatureMin	°C	-40.0000
Storage TemperatureMax	°C	85.0000
Storage TemperatureMin	°F	-40.0000
Storage TemperatureMax	°F	85.0000

Mechanical Characteristics	
Technology	Gas discharge tube
Connection to Network	Connector 4.3-10 Male/Female
Failsafe mode	Short-circuit
Contacts	Bronze/Surface Au-Ag
Insulation material	PTFE
TECHNOLOGY	GDT
CONNECTION METHOD	SERIES CONNECTOR, BI-DIRECTIONAL
MOUNTING	BULKHEAD, OPTIONAL BRACKET
MATERIAL	Cu, Zn, Sn plated Brass, PTFE
NEMA RATING (IP RATING)	NEMA 6P (IP67)
DIMENSIONS	See diagram
WEIGHT	0.30 lbs
Standards	
RohS compliance	Yes
UL STANDARD	UL497E
UL CATEGORY	QVLA
UL FILE NUMBER	E349646
STANDARDS	NOM-003-SCFI-2014, NOM-001-SCFI-1993
ENVIRONMENTAL STANDARDS	ROHS
Part number	
60904	