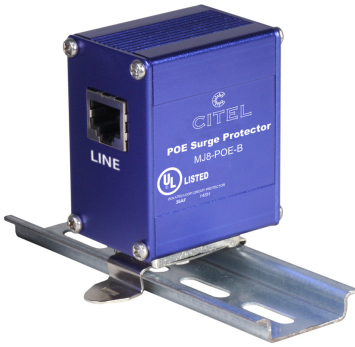




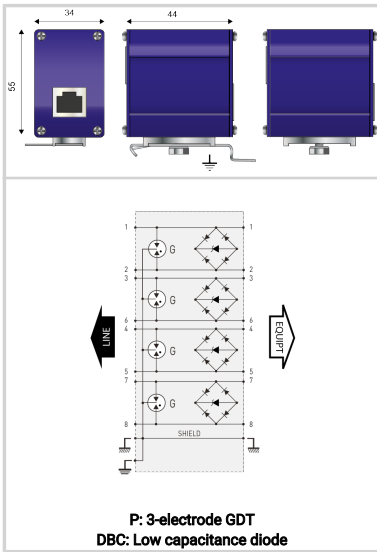
Indoor Cat. 6A 10Gb/s rated POE Surge Protective Device & Mounting Hardware Kit

CITEL

MJ8-POE-B



- ▶ POE++ compatible Surge Protector
- ▶ Shielded RJ45 connectors
- ▶ 16 kA total surge discharge capability
- ▶ Max Transmission up to 1Gbps
- ▶ Max Bandwidth up to 100 MHz
- ▶ UL497B



Electrical Characteristics		
Network		POE-B and Gigabit Ethernet, High POE
Nominal line voltage	Un	5 Vdc/48 Vdc
Max. DC operating voltage	Uc	7.5 Vdc (1.2.3.6) - 60 Vdc (4.5.7.8)
Max. frequency	f max.	100 Mhz
Max. data rate		10/100/1000 Mbps
Insertion loss		< 1 dB
Max. load current @25°C	IL	2 A
Max. POE power (4PPOE)		90 W
Nominal Discharge Current, X-C (Line/Earth) 8/20µs Test x 10 - C2 Category	In L/PE	2000 A
Max. discharge current max. withstand @ 8/20 µs, 8X-C (1&2&3&4&5&6&7&8 to Earth)	Imax Total	16 kA
Protection Level C3 (10/1000µs), 300 applications@10 A, Y-Y (Line/Line)	Up	20/70 V
Protection Level C3 (10/1000µs), 300 applications@10 A, X-C (Line/Earth)	Up	20/70 V
Impulse current D1 (10/350µs), 2 applications, X-C (Line/Earth)	Iimp	500 A
Capacitance @1MHz, X-C (Line/Earth)	C	< 5 pF
Mechanical Characteristics		
Technology		GDT+TVS diode
Connection to Network		RJ45 shielded connectors Female input/output
Format		Metallic box with connectors input/output
Accessory(s) provided		DIN rail adapter, screw, screw nut, earthing plate, countersunk screw, cable shoe
Operating temperature	Tu	-40/+85°C
Protection rating		IP20
Failsafe mode		Short-circuit - transmission cut-off
Pinout		(1-2)(3-6)(4-5)(7-8)
NETWORK CONFIGURATION		Single POE Line
CONNECTOR TYPE		Shielded RJ45
PIN OUT		[1-2][3-6][4-5][7-8]
DIMENSIONS		See diagram
Standards		
Certification		UL listed
UL STANDARD		UL497B
UL CATEGORY		QVGG
UL FILE NUMBER		E184939
STANDARDS		NOM-003-SCFI-2014, NOM-001-SCFI-1993
ENVIRONMENTAL STANDARDS		ROHS
Part number		
581518		

