

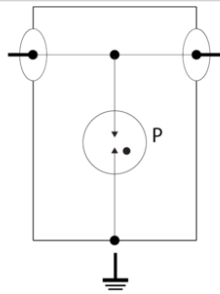
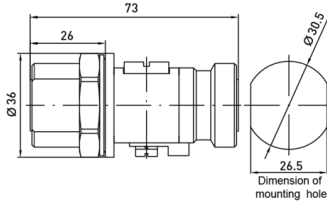


CITEL

P8AX50-716/FF



↳ 6GHz Bi-Directional Coaxial Surge Protector - No follow current - Low Insertion Loss - Waterproof Design - DC Pass



P: 2-electrode gas discharge tube

Electrical Characteristics			
Max. DC operating voltage	Uc		400 Vdc
Frequency range	f		DC-3.5 GHz
Insertion loss			< 0.2 dB
Return loss			> 20 dB
Impedance			50 ohms
VSWR			<1.2:1
Max. load current @25°C	IL		10 A
Protection mode(s)			Common mode
Impulse current <i>2 x 10/350µs Test - D1 Category</i>	limp		1 kA
Nominal discharge current <i>C2 Category</i>	In		5 kA
Max Power			780 W
DC Pass			Yes
Insulation resistance	IR		≥10 GOhms
RF Power <i>Maximum</i>	W		780.0000
Return Loss <i>Minimum</i>	db		>20
VSWR <i>Maximum</i>	:1		<1.2:1
Max Total Discharge Current <i>Imax (8/20µs x 1)</i>	kA		20.0000
Max Discharge Current <i>Imax (8/20µs x 1)</i>	kA		20.0000
RF SPD TYPE			UL497E LISTED
VOLTS	(V)		48
AC/DC/DC PV/RF			RF
WIRES			1W+GROUND
LINE CURRENT MAX	(A)		10
AMBIENT MIN	(C)		-40
AMBIENT MAX	(C)		+85
IMAX <i>8/20µs</i>	(kA)		20
FREQUENCY RANGE	(GHz)		0-4.0
INSERTION LOSS (@ FREQ)	(db)		<0.2
RETURN LOSS	(db)		>22
VSWR			<1.25:1
Installation			
Operating Temperature <i>Min</i>	°C		-45.0000
Operating Temperature <i>Max</i>	°C		85.0000
Operating Temperature <i>Min</i>	°F		-50.0000
Operating Temperature <i>Max</i>	°F		85.0000
Operating Relative Humidity <i>Max</i>	%RH		Can be submerged
Operating Altitude <i>Min</i>	Ft		2000.0000
Operating Altitude <i>Max</i>	Ft		6500.0000
Housing/Enclosure material			Cu, Zn, Sn plated Brass
Mounting			Bracket or through hole
IP Environmental rating/IP			IP65
NEMA Environmental rating/NEMA			NEMA 4
Installation Location			Indoor / outdoor
Spare part			BB HF 500/20
Accessories			BK
Product Dimension <i>L</i>	mm		73.0000
Product Dimension <i>H</i>	mm		36.0000
Product Dimension <i>W</i>	mm		26.5000
Product Dimension <i>L</i>	In		2.8700

Product Dimension <i>H</i>	In	1.4200
Product Dimension <i>W</i>	In	1.0400
Miscellaneous		
Individual Pack		No
Storage Temperature <i>Min</i>	°C	-40.0000
Storage Temperature <i>Max</i>	°C	85.0000
Storage Temperature <i>Min</i>	°F	-40.0000
Storage Temperature <i>Max</i>	°F	85.0000
Mechanical Characteristics		
Technology		Gas discharge tube
Connection to Network		Connector 7/16 Female/Female
Failsafe mode		Short-circuit
Contacts		Bronze/Surface Au-Ag
Insulation material		PTFE
TECHNOLOGY		GDT
CONNECTION METHOD		SERIES CONNECTOR, BI-DIRECTIONAL
MOUNTING		BULKHEAD, OPTIONAL BRACKET
MATERIAL		Cu, Zn, Sn plated Brass, PTFE
NEMA RATING (IP RATING)		NEMA 6P (IP67)
DIMENSIONS		See diagram
WEIGHT		0.30 lbs
Standards		
RohS compliance		Yes
UL STANDARD		UL497E
UL CATEGORY		QVLA
UL FILE NUMBER		E349646
STANDARDS		NOM-003-SCFI-2014, NOM-001-SCFI-1993
ENVIRONMENTAL STANDARDS		ROHS
Part number		
60417		