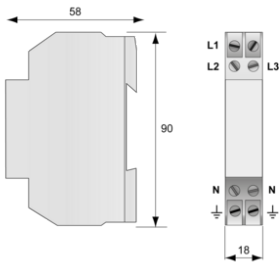
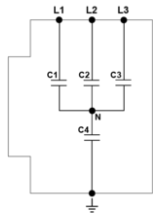




- EMI Line Filter
- AC Systems to 600V-50-60Hz
- Din Rail Mounted
- UL 1283



Electrical Characteristics	
Network	3-phase AC
VOLTS	(V) 347/600
CAPACITANCE	(pF) C1=C2=C3-6.8nF, C4-4.7nF
Mechanical Characteristics	
Connection to Network	By screw terminals: 2.5mm ² max.
Standards	
Certification	UL1283
Part number	357931



C1, C2 & C3: Capacitors Type X1
C4: Type Y2 Capacitor Type Y2