

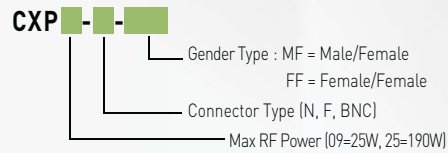
Hybrid DC Blocked Coaxial Surge Protector

CXP Series



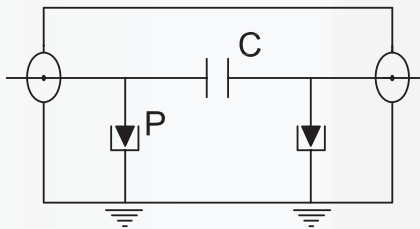
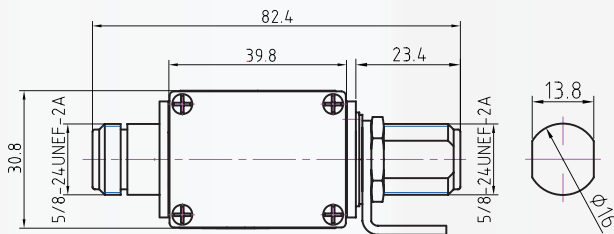
CXP25-NW/FF/DCB

- **6GHz Bi-Directional Coaxial Surge Protector**
- **Low Insertion Loss**
- **High Energy GDT Technology**
- **Waterproof Design**
- **DC Blocked Configuration**
- **Bi-Directional Protection**



Dimensions & Electrical Diagram

(in mm)



Characteristics

CITEL Part Number	CXP09-DCB	CXP25-DCB
Frequency Range	125-1000MHz	
Technology	Hybrid DC Block	
Insertion Loss	<0.15db	
Return Loss	≥20db	
VSWR	<1.2:1	
I _{max} (8/20 μs)	20kA	
Max Power	25W	190W
Max current	6A	
Impedance	50 ohms	
Connection Method	Series (bi-directional)	
Mechanical Characteristics		
Connectors	N, F, BNC	
Grounding	M6 Screw, Bulkhead, Bracket	
Environmental Rating	IP65	
Operating Temp	-50°C to +85°C	
Max. Operating Altitude	13,000 ft (4,000m)	
Relative Humidity	up to 5 to 95% non-condensing, up to 100%	
Weight	5.5 oz	4.9 oz



CITEL