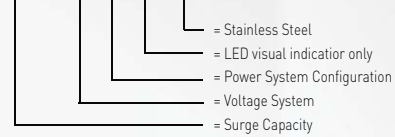


AC Surge Protectors M Series

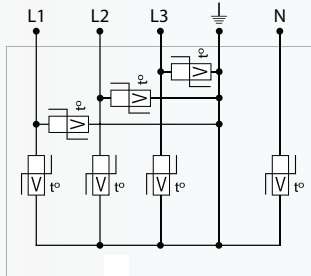
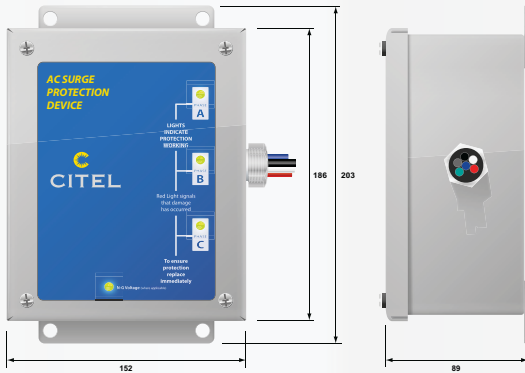


- **Type 2 AC Power Surge Protector**
- **Imax: 80-200kA per phase**
- **Protects All Modes**
- **On Board Diagnostics: LED indicators, Audible Alarm, and Remote Contacts**
- **EMI/RFI Noise Filtering**
- **Sinewave Tracking**
- **UL 1449 4th Edition Listed**
- **Optional Surge Counter**

M200-480D/L-SS



Dimensions



V : High energy varistor

Characteristics

Series	M80	M100	M160	M200
Maximum discharge current Imax	80 kA	100 kA	160 kA	200 kA
Type of network				
120/240 Vac Split Phase 3Ph+G	M80-120T	M100-120T	M160-120T	M200-120T
120/208 Vac Wye 3Ph/N+G	M80-120Y	M100-120Y	M160-120Y	M200-120Y
220/380 Vac Wye 3Ph/N+G	M80-220Y	M100-220Y	M160-220Y	M200-220Y
277/480 Vac Wye 3Ph/N+G	M80-277Y	M100-277Y	M160-277Y	M200-277Y
240/415 Vac Wye 3Ph/N+G	M80-240Y	M100-240Y	M160-240Y	M200-240Y
120/120/240 Vac Hi-Leg Delta 3Ph/N G	M80-240DCT	M100-240DCT	M160-240DCT	M200-240DCT
240 Vac Delta 3Ph+G	M80-240D*	M100-240D*	M160-240D*	M200-240D*
347/600 Vac Wye 3Ph/N+G	M80-347Y	M100-347Y	M160-347Y	M200-347Y
480 Vac Delta 3Ph+G	M80-480D*	M100-480D*	M160-480D*	M200-480D*
Protection modes	L/N - L/G - N/G - L/L			
UL short-circuit current rating	200 kA			
RFI filtering	- 40 dB			
Standards compliance	UL1449 4th Edition Type 2			
Safety				
Thermal disconnecter	Internal to each component			
Electrical disconnecter	Internal to each surge protector			
Failure indicators	LED, audible alarm, and remote signaling (only LED on /L)			
Mechanical Characteristics				
Housing material	Steel - NEMA 4/12 (Stainless Steel NEMA 4X)			
Operating temperature	-40/+185 °F (-40/+85 °C)			
Mounting	Wall mounting by screws (not supplied)			
Connection to AC network	Hard-Wired			
Dimensions (H x L x D)	8 x 6 x 4 in (95 x 63.1 x 35 mm)			
Specific features				
Disconnection switch	No			

* Only available in /L version

Model	Description	MCOV	Voltage Protection Rating (VPR)			
			L-N	L-G	N-G	L-L
Mxxx-120T	120/240 Vac Split Phase 2Ph+N+G	150 Vac	800	900	800	1800
Mxxx-120Y	120/208 Vac Wye 3Ph+N+G	150 Vac	800	900	800	1800
Mxxx-220Y	220/380 Vac Wye 3Ph+N+G	320 Vac	1500	1200	1200	2000
Mxxx-240Y	240/415 Vac Wye 3Ph+N+G	320 Vac	1500	1200	1200	2000
Mxxx-240DCT	120/120/240 Vac Hi-Leg Delta 3Ph+N+G	150/320 Vac	1500	1200	1200	1800
Mxxx-240D*	240 Vac Delta 3Ph+G	320 Vac	-	1200	-	2000
Mxxx-277Y	277/480 Vac Wye 3Ph+N+G	320 Vac	1500	1200	1200	2000
Mxxx-347Y	347/600 Vac Wye 3Ph+N+G	550 Vac	1800	1800	1800	3000
Mxxx-480D*	480 Vac Delta 3Ph+G	550 Vac	-	1800	-	3000

U042301B