

**1° Géométrie: suivant plan**  
**Geometry: See drawing**

SCOE.01.0006

**2° Caractéristiques initiales**

**Primary Technical Properties: (before test)**

Tension et limites: Tension and limits:		90V/20	150V/20	230V/20	300V/20	350V/20
Tension statique: DC Spark-over Voltage:	100V/s	72V-108V	120V-180V	184V-276V	240V-360V	280V-420V
Tension dynamique: Impulse Spark-over Voltage:	1kV/μs	≤640V	≤700V	≤700V	≤900V	≤900V
Résistance isolement: Insulation Resistance:	≤90V ≥90V 50V DC 100V DC	≥10GΩ	≥10GΩ	≥10GΩ	≥10GΩ	≥10GΩ
Capacité: Capacitance:	1MHz	≤0.3pF	≤0.3pF	≤0.3pF	≤0.3pF	≤0.3pF
Tension d extinction: Holdover Voltage:	RC//:150Ω- 100nF;RS=330Ω	≥60V	≥80V	≥80V	≥80V	≥80V
Tension de lueur: Glow Voltage:		≤100V	≤100V	≤100V	≤100V	≤100V
Tension d arc Arc Voltage:		≤25V	≤25V	≤25V	≤25V	≤25V



**3° Pouvoir d écoulement: (après tests)**

**Power-flow Properties: (after life test)**

Tension statique: DC Spark-over Voltage:		72V-108V	120V-180V	184V-276V	240V-360V	280V-420V
Tension dynamique: Impulse Spark-over Voltage:		≤640V	≤700V	≤700V	≤900V	≤900V
Résistance isolement: Insulation Resistance:		≥1000MΩ	≥1000MΩ	≥1000MΩ	≥1000MΩ	≥1000MΩ
Décharge Alternative AC discharge current:	50/60Hz,600V 5times,1s interval 3min	10A	10A	10A	10A	10A
Décharge Impulsionnelle Impulse discharge current:	8/20μs +5/-5,interval 3min	10KA	10KA	10KA	10KA	10KA
Décharge Impulsionnelle Impulse discharge current:	8/20μs 1time	25KA	25KA	25KA	25KA	25KA
Décharge Impulsionnelle Impulse discharge current:	10/350μs 1time	2KA	2KA	2KA	2KA	2KA
Décharge Impulsionnelle Impulse life:	10/1000μs 300times,interval 2min	50A	50A	50A	50A	50A

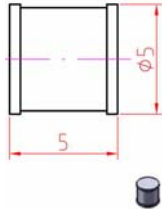
**4° Code:**

**Part number:**

	9298001	9298002	9298057	9298013	9298015
QVGQ2.E184939	YES	YES	YES	YES	YES
					
REG.-Nr.40008209					

1. This product is 2002/95/EC directive (ROHS); all test are ITU-T K.12 compliant.

Date	Code N°
2009-5-14	92 980 XX XX



**1° Géométrie: suivant plan**  
**Geometry: See drawing**

SCOE.01.0006

**2° Caractéristiques initiales**

**Primary Technical Properties: (before test)**

Tension et limites:		<b>550V/20</b>	<b>600V/-15+20</b>
Tension and limits:			
Tension statique:	100V/s	440V-660V	510V-720V
DC Spark-over Voltage:			
Tension dynamique:	1kV/μs	≤ 1200V	≤ 1200V
Impulse Spark-over Voltage:			
Résistance isolement:	≤ 90V ≥ 90V	≥ 10GΩ	≥ 10GΩ
Insulation Resistance:	50V DC 100V DC		
Capacité:	1MHz	≤ 0.3pF	≤ 0.3pF
Capacitance:			
Tension d extinction:	RC//:150Ω-	≥ 80V	≥ 80V
Holdover Voltage:	100nF;RS=330Ω		
Tension de lueur:		≤ 100V	≤ 100V
Golw Voltage:			
Tension d arc		≤ 25V	≤ 25V
Arc Voltage:			

**3° Pouvoir d écoulement: (après tests)**

**Power-flow Properties: (after life test)**

Tension statique:		440V-660V	510V-720V
DC Spark-over Voltage:			
Tension dynamique:		≤ 1200V	≤ 1200V
Impulse Spark-over Voltage:			
Résistance isolement:		≥ 1000MΩ	≥ 1000MΩ
Insulation Resistance:			
Décharge Alternative	50/60Hz,600V		
AC discharge current:	5times,1s interval 3min	10A	10A
Décharge Impulsionnelle	8/20μs		
Impulse discharge current:	+5/-5,interval 3min	10KA	10KA
Décharge Impulsionnelle	8/20μs		
Impulse discharge current:	1time	25KA	25KA
Décharge Impulsionnelle	10/350μs		
Impulse discharge current:	1time	2KA	2KA
Décharge Impulsionnelle	10/1000μs		
Impulse life:	300times,interval 2min	50A	50A

**4° Code:**

**Part number:**

9298025 9298026



QVGQ2.E184939



REG.-Nr.40008209

1. This product is 2002/95/EC directive (ROHS); all test are ITU-T K.12 compliant.

Date	Code N°
2009-5-14	92 980 XX XX